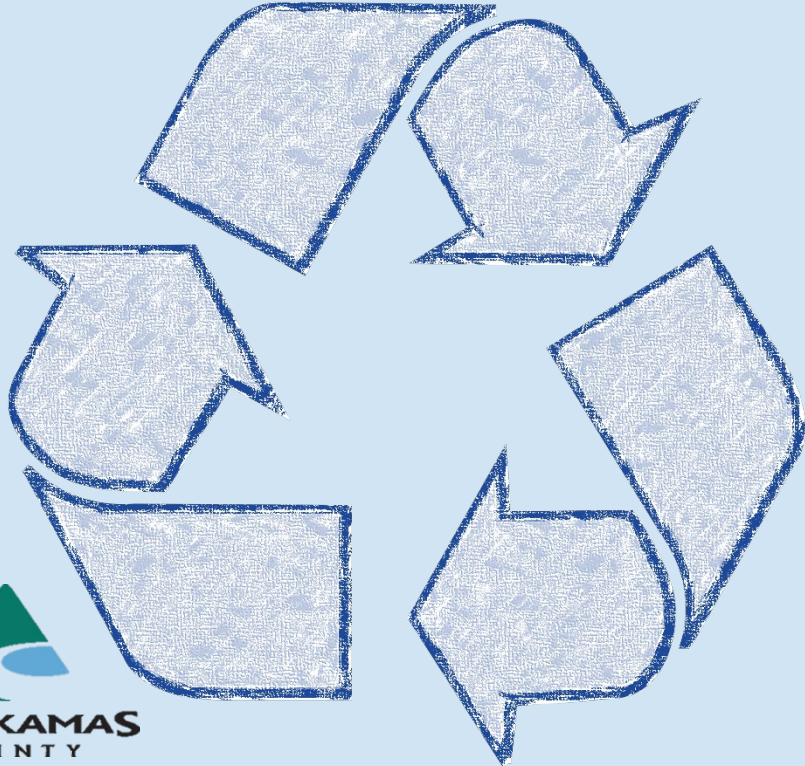




# Recycling at Home in Clackamas County

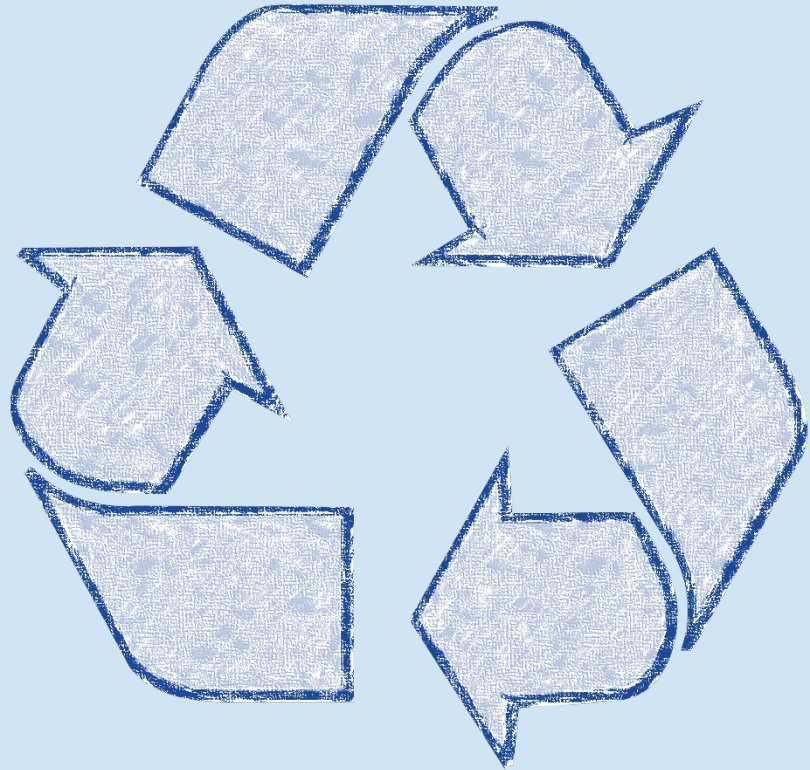
Master Recycler Class I Clackamas County 2024

Tenille Beseda Fillwock





# Recycling at Home - Overview



- What Goes Where
- Single-Family Garbage & Recycling
- Multifamily Garbage & Recycling
- Service Set-ups / Set-outs
- Who's Involved
- Challenges
- Resources
- Opportunities for Master Recyclers



# What Goes Where?

 **Recycling**    Reciclaje    Ресиклаж    Rác Tái chế    回收



Plastic bottles, plastic round containers, metal, paper & cardboard  
6 oz or larger, empty & dry

 **Glass**    In separate glass bin

Vidrio    Стекло    Rác Thủy tinh    玻璃



Bottles & jars only,  
empty & dry, no lids

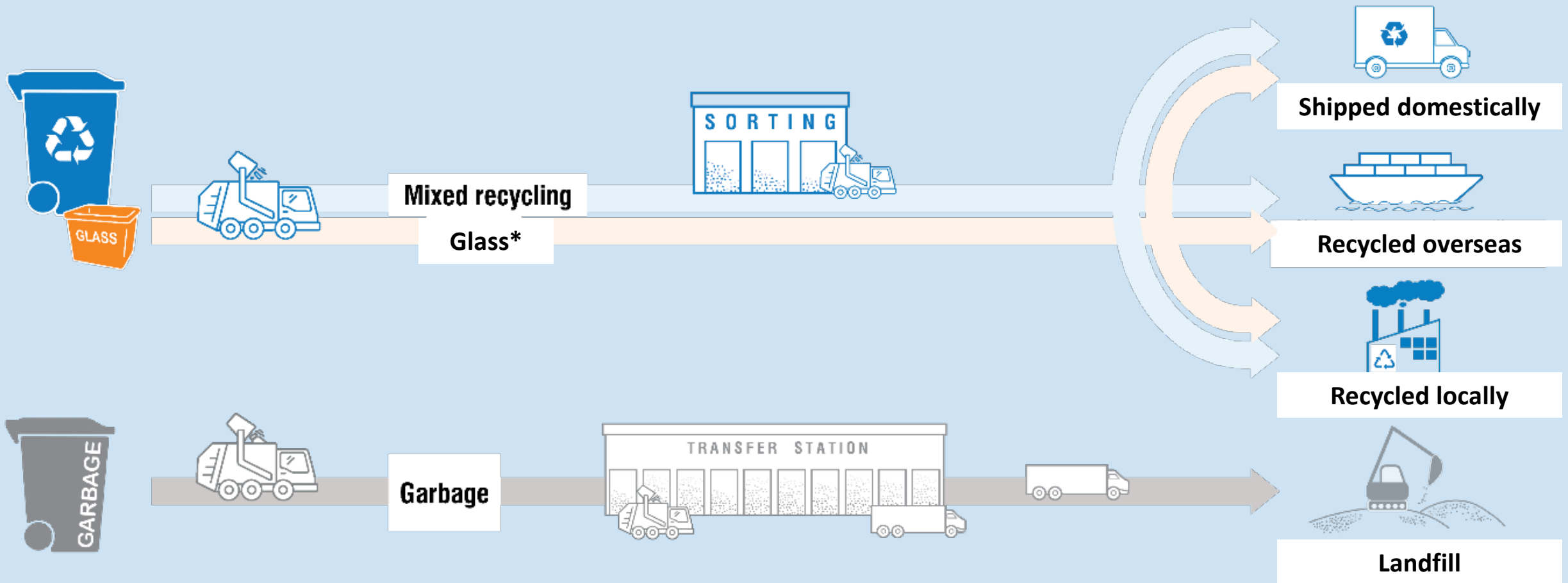
Missing a glass bin? Call your garbage & recycling company.

 **Garbage**    Basura    Mycop    Rác còn lại    垃圾



All garbage, including plastic bags, to-go containers, lids & packaging

# Where it Goes





# What Goes Where and Where it Goes

## Batteries

Pilas Батарейки Bin 电池

1. Tape ends of all batteries, except alkaline batteries use clear tape, household batteries only
2. Bag all batteries in a 1-qt zip-seal bag
3. Set on top of glass in glass bin



Single-family residential customers only.



## Yard Waste\*

Desechos de jardinería    Хозяйственные отбросы    Rác Sãn Vườn    庭院废物

Leaves, grass, small branches, plants & trimmings



\*Urban areas only. Cities of Lake Oswego, Milwaukie, and Wilsonville may include food scraps.

## Food & Yard Waste\*

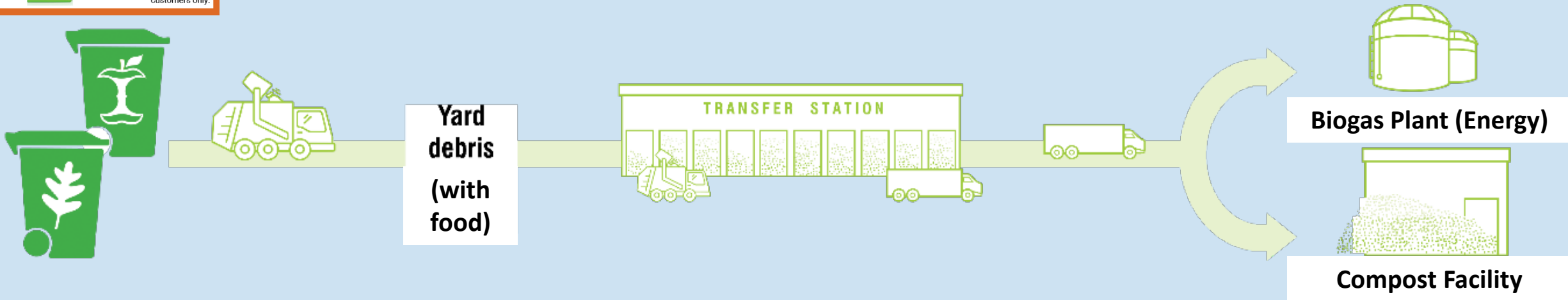
Alimentos y desechos de jardinería    Пищевые и хозяйственные отбросы    Phế thải Thực phẩm và Rác Sãn Vườn    食物及庭院废物



Food scraps, coffee filters, plants & trimmings

\*Only available in the Cities of Lake Oswego, Milwaukie, and Wilsonville.

 No pet waste, to-go containers, garbage, lumber





# Optional Additional Service

## Recycle+



- Plastic Film
- Clothes/shoes/textiles
- Plastic clamshells
- Household lightbulbs
- Rotating reuse item\*

## Ridwell

- Plastic Film
- Clothes/shoes/textiles
- Plastic clamshells
- Household lightbulbs
- Batteries
- Multi-layer plastic
- Styrofoam™ (extra)





# Residential Curbside Service



- Single-family homes (owners, renters)
- 1:1 garbage account to home
- Garbage, recycling (including glass on the side – batteries, too), and yard debris\* (in urban areas only); motor oil on the side
  - \* Customers in the cities of Lake Oswego, Milwaukie, and Wilsonville can include food scraps in their yard debris bins*
- Cart colors vary by garbage/recycling company (blue doesn't always mean recycling)



# Multifamily



- 5 or more units
- Not just apartments
- Shared trash & recycling
- 1:5-300+ garbage account to home
- Garbage & recycling (including glass on the side – no batteries); yard debris rare, food scraps even more rare
- Cart colors vary by garbage/recycling company (but things are changing...)
- Commercial, residential or...?



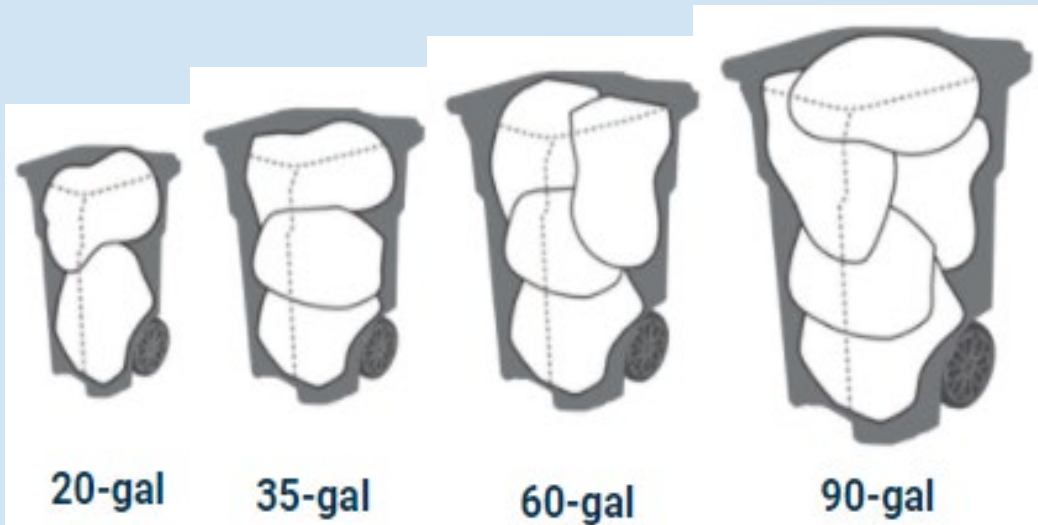


# Service Summary

	Single-Family (SF) Residential	Multifamily (MF) Commercial
Portland	Franchised	Open Market
Rest of Region	Franchised	Franchised



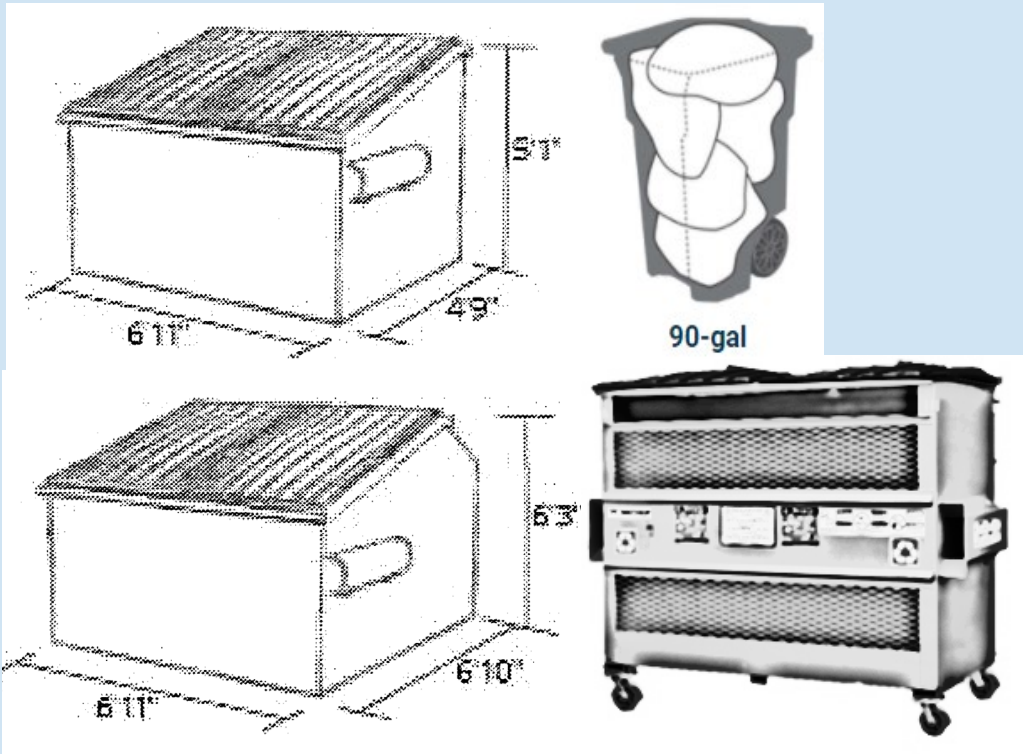
# Right Sizing – Single-Family



- Increase/decrease size/frequency to meet household need
- Size & frequency of garbage impact monthly bill
- Recycling included with garbage service
- Extra garbage can be set out for extra fee
- Call for large item pickups (couches, mattresses, etc.) for an extra fee

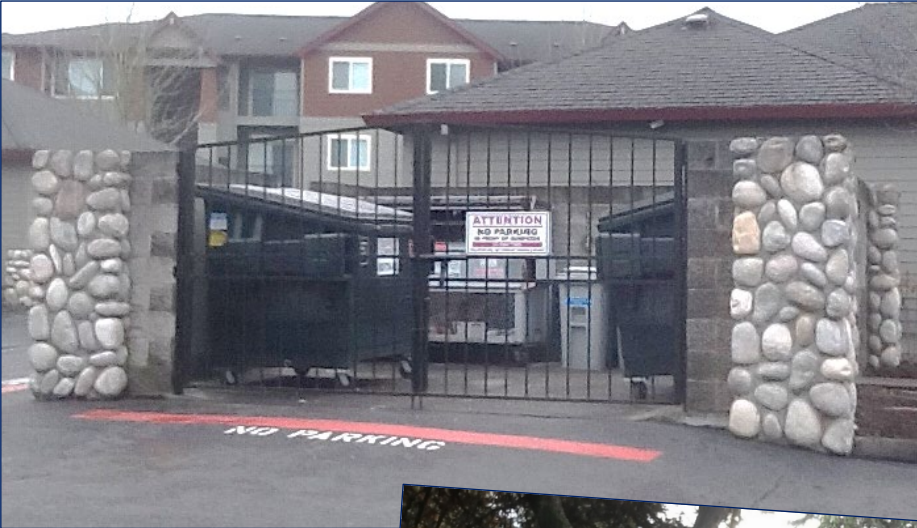
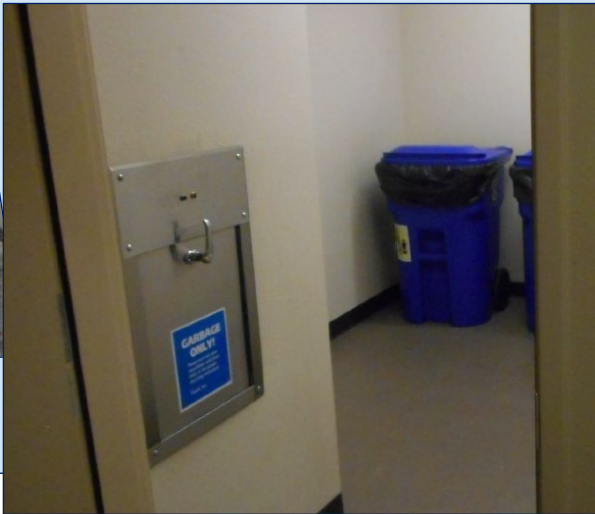


# Right Sizing – Multifamily



- Carts, containers, compactors, and more!
- Increase/decrease size/frequency to meet community need
- Size & frequency of garbage impact monthly bill
- Recycling included with garbage service (mostly)
- Can call for extra pickups (extra fee)

# Right Sizing – Multifamily





# Who's Involved?



- Residents
- Collection companies
- Property owners, managers, & staff
- Local governments
- Metro
- DEQ
- Master Recyclers



# Challenges

**Bulky waste**



**Hazardous Waste**



**Holiday Overflow**



**E-waste**



# Additional Multifamily Challenges

- Infrastructure/service
- Signage (or lack thereof)
- Communication
- Cultural “norms”
- “Revolving door” PM
- Out of area/  
state residents





# Multifamily Improvements



- Regional signage by 2024
- Standard bin colors by July 1, 2028
- Minimum volume/frequency requirements
- Regularly occurring bulky waste collection by July 1, 2025
- Garbage/recycling area standards





# Recycle Right Resources

- Flyers/Magnets
- Video
- Postcards
- Bag
- Props





# Recycle Right Resources

- Publications
- Signage
- Electronic
- Phone
- Email

TRASH TALK

## ClackCo Recycle Guide

Recycle right to reduce the energy required to make new products, reduce pollution, and create jobs.

### Recycling

Reciclaje  
Утиль  
Rác Tái chế  
回收

Plastic bottles, plastic round containers, metal, paper & cardboard  
6 oz or larger, empty & dry

### Glass

In separate glass bin  
Vidrio  
Стекло  
Rác Thủy tinh  
玻璃

Bottles & jars only  
empty & dry, no lids

### Yard Waste\*

Desechos de jardinería  
Хозяйственные отбросы  
Rác Sân Vườn  
庭院废物

Leaves, grass, small branches, plants & trimmings

\*Not all areas only. Cities of Lake Oswego, Milwaukie, and Wilsonville may include food scraps.

### Garbage

Basura  
Mycop  
Rác còn lại  
垃圾

All garbage, including plastic bags, to-go containers, plastic lids & packaging

Motor OR: Put in a clear and labeled, screw-top container (e.g., milk jug) and set next to your glass bin. Residential only. Large Items (appliances, furniture, etc.): Call your garbage and recycling company for special pick-up and pricing.

Need more information?  
Metro's Recycling Information Center  
503-224-3000  
ClackCo Sustainability & Solid Waste  
503-557-6363

@recycleornot  
Direct message recycling questions and pictures  
Full guide online - 7 languages  
www.clackamas.us/recycling/recycleguide.html

## Garbage

Basura  
Mycop  
Rác còn lại  
垃圾

## Recycling

Reciclaje  
Утиль  
Rác Tái chế  
回收

## Glass

Vidro  
Стекло  
Rác Thủy tinh  
玻璃

Bottles & jars only, empty & dry

No lids, lightbulbs, caps, ceramics, broken glass

RecycleOrNot.org

Español

Recycle right in the greater Portland, Oregon area. Sort the items by clicking Recycle or Trash.

Recycle

I'm ready

Clackamas County Sustainability Newsletter for Multifamily Property Managers  
Spring 2024

Your quarterly guide to successful recycling & waste reduction from Clackamas County's Sustainability & Solid Waste Program

# Opportunities for Master Recyclers



- Tabling at community events
- Presentations (in-person/virtual)
- Door-to-door/door hanger outreach
- Adopt-a-community
- Green Teams
- Organize a swap event or community garage sale
- Partner with AmeriCorps



# Key Resources

- ClackCo Sustainability & Solid Waste | 503.557.6363  
[www.clackamas.us/recycling](http://www.clackamas.us/recycling) | [www.clackamas.us/reciclaje](http://www.clackamas.us/reciclaje)  
Email: [wasteinfo@clackamas.us](mailto:wasteinfo@clackamas.us)
- Metro's Recycling Information Hotline | 503.234.3000  
[www.oregonmetro.gov/tools-living/garbage-and-recycling/find-a-recycler](http://www.oregonmetro.gov/tools-living/garbage-and-recycling/find-a-recycler)
- RecycleOrNot | ReciclarONo
  - [Game.RecycleOrNot.org](http://Game.RecycleOrNot.org) | [Game.ReciclarONo.org](http://Game.ReciclarONo.org)
  - Instagram [@recycleornot](https://www.instagram.com/recycleornot) | [@reciclarono](https://www.instagram.com/reciclarono)

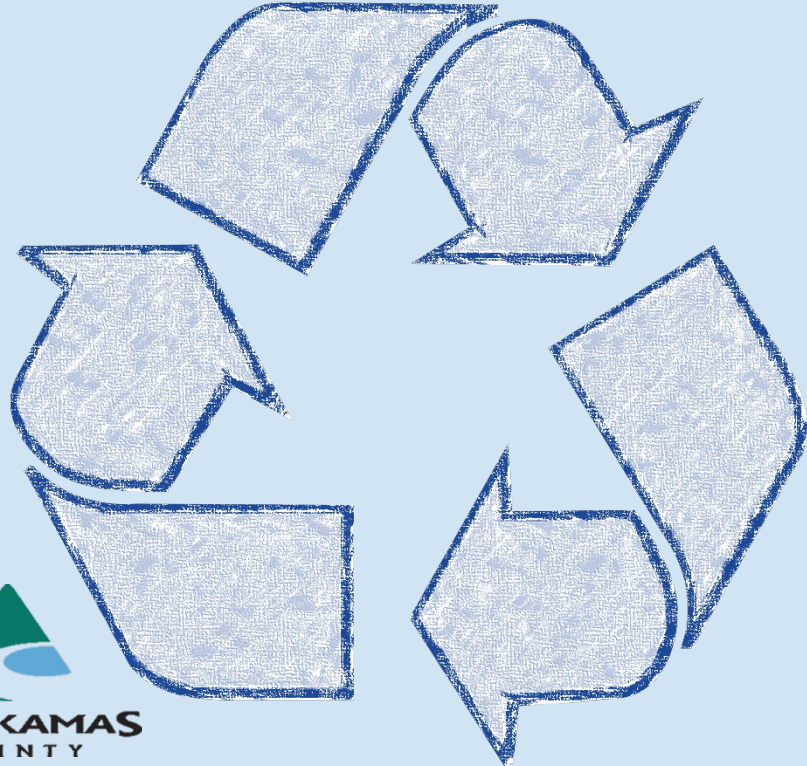


Questions?





# ClackCo Contact Info



Sustainability  
& Solid Waste

Colleen Johnston

503.742.4463 | [cjohnston@clackamas.us](mailto:cjohnston@clackamas.us)

Sophie Richards

503.742.4456 | [srichards@clackamas.us](mailto:srichards@clackamas.us)

Tenille Beseda Fillwock

503.742.4451 | [tbeseda@clackamas.us](mailto:tbeseda@clackamas.us)